

SPECIALIST
IN **POOLCOVERS**

inducor.



SPECIALIST IN POOLCOVERS

Heat your pool, not our planet

With this statement, Inducon has been designing and developing environmental solutions for over 4 decades. An insulating cover saves you more than 50% in energy costs. Moreover, an Inducon cover reduces the evaporation of water and chemicals. Therefore it is an investment that will pay for itself in a number of years.

Inducon has been around for a while. We have perfected our covers to such an extent that they will last 15 to 20 years without any problem. Combine this with periodic maintenance and you have a successful formula. In addition to the patented slatted folding cover, Inducon has also introduced slatted rolling covers and foil covers onto the market. Whether it's an indoor or outdoor pool, our covers are fully customised to your needs.

One button to cover an entire basin is not a luxury. The efficiency of the insulation value of a cover is at its highest when there is a high degree of use. Therefore we find ease of use, as well as safety and reliability, one of our key features.

Safety, reliability and ease of use are uncompromising core values, but the eye also wants something. At Inducon, we understand that a pool cover should not detract from your decor. For example, our slatted rolling cover can be fully integrated into the pool floor so it is completely out of sight when not in use. We can also design the casing for some of our poolcovers completely according to your wishes.

De Inducon zwembadafdekkingen

- Energy savings of 50%
- Investment recouped in 5 to 10 years
- Robust; a solid durable construction
- For both indoor and outdoor pools
- Operates in all weather conditions
- Average lifespan of 20 years
- Custom designed and made
- Suitable for pre-existing pools

inducon.

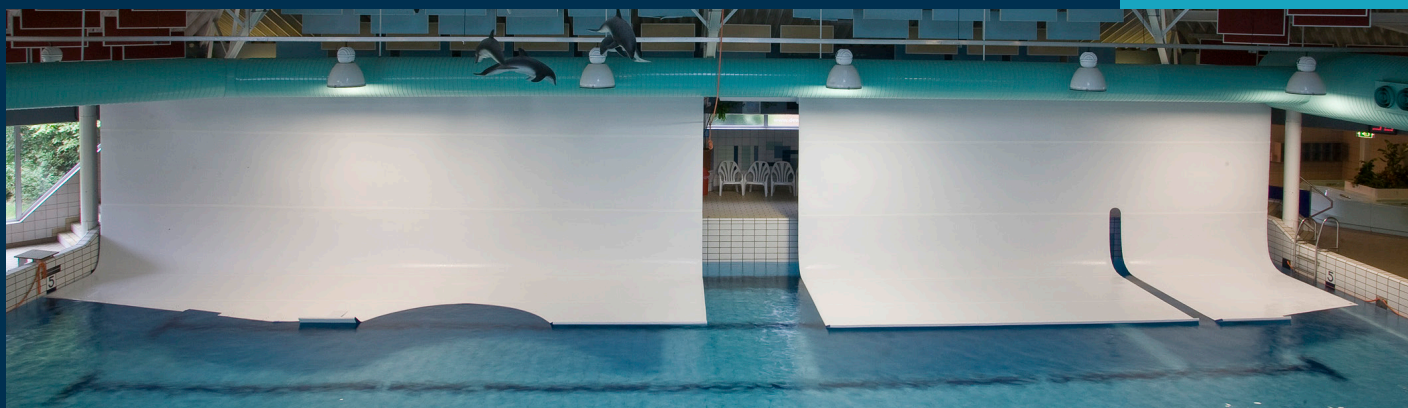
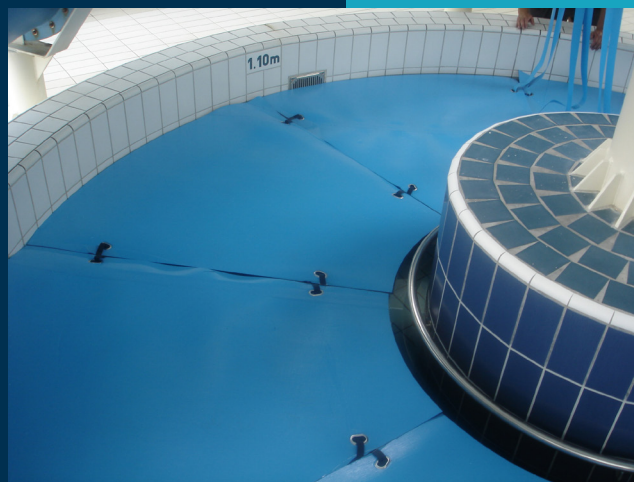
FOIL COVERS

Light and versatile

Foil covers are suitable for both indoor and outdoor pools and they can be produced in countless shapes and sizes. Foil covers are to be rolled up around an axle, as wide as the cover itself. This way of fitting creates a versatile range of possibilities in deployment.

From the ceiling, on pillars, concealed in a (seating) bench or moveable and on wheels: you can do almost anything with a foil cover. The foil itself has two variants: standard film and Copol film, where the Copol variant is placed in a higher quality segment. Unlike the slatted covers, the rolling up and down of the foil happens not completely autonomous, but this too requires only minimal effort.

inducoor.



SLATS ROLLING COVER

From invisible to fully covered in no time

The most versatile poolcover is the slatted rolling cover. It can be placed in many ways beside, above or within the pool. Exotic shapes in the pool can effortlessly be reproduced in the slatted cover for the highest possible level of insulation.

The versatility of the rolling cover is illustrated by its numerous applications. The cover can be placed on the edge of the pool as a static or mobile option. It can also be placed above the pool: a construction on pillars. In addition, the cover is often installed in a shaft in the pool floor, covered by a lid. Thus it can also be used as an addition to a movable floor, to cover the entire pool together.

induco.



SLATS FOLDING COVER

The workhorse of the collection

The patented folding cover is specially designed for the efficient covering of large pools. At the push of a button, a large pool changes from ready-to-swim to being fully insulated.

The name says it all. The slats fold into a shaft behind the pool. This ensures the limitlessness of the length of the cover. The cover is formed by hard Polyvinyl slats. These slats have closed air chambers for both a floating and an insulating effect. The shaft itself is usually partly sunk into the platform and can be covered to ones liking. With a little adjustment, the platform can be made sturdy enough to walk on or it can be equipped with starting blocks.

A slatted folding cover exists of numerous rows of slats, depending on the width of a basin. These rows are connected in a way that leaves no room for evaporation, unlike a rolling cover.

inducoor.

